

Description

A highly reliable and legible readout capable of maintenance free operation over years in harsh environments (IP65 =Nema 4x). Moderate power consumption yields longer life and lower lifetime cost.

The stainless steel front will elegantly fit any office environment as well as outdoors or in an industrial plant.

Highest quality LEDs are used to extend product life and reliability.

Delivered complete for normal use. Additional selection of options such as RF, other interfaces, power and mounting hardware is available.

Quick Data

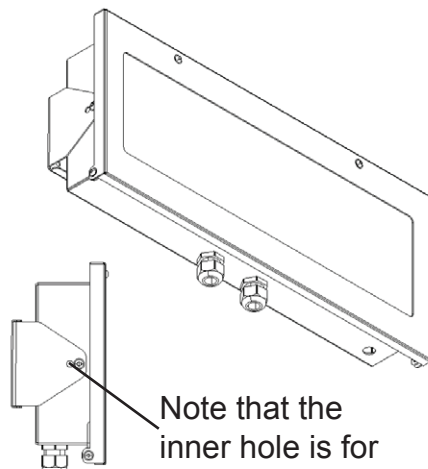
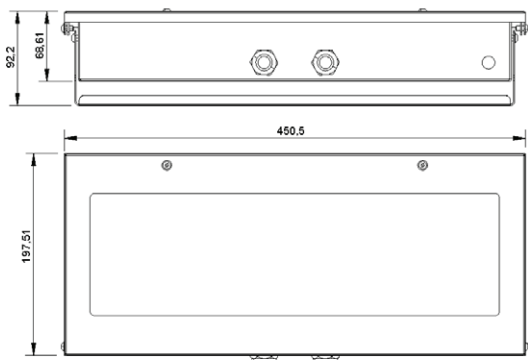
DISPLAY CHARACTERISTICS

Character Height	67 mm
Number of digits	6
Extra segments	10 annunciators plus Stop & Go (red/green) light fields
Resolution	Seven segments plus colors and decimal point
Technology	30 degree highest quality LEDs
Designator	Auto or Permanent label sticker (eg. kg, t, rpm, °C, pH)
Backlight	Not applicable
Power	Max. 20W

MECHANICAL

Size casing	450,5 mm x 197,5 mm x 68,5 mm (l x h x d)
Size inc. bracket etc	453 mm x 210 mm x 93 mm (l x h x d)
Materials	1.25 mm stainless steel front, acrylic glass. Back is laquered 1,5mm aluminium
Protection	IP65 waterproof housing, guaranteed for unprotected outdoor use and hose down washing.
Operating temp.	-15°C to +65°C (intermittent up to +75°C). No problem found down to -35°C (trafo)
Weight	2,3 kg net, Shipping: 2,8 kg 50 x 22 x 10 cm

Measures given in metric mm



©2012-Dec-12 Norsk Display AS

©2012 Norsk Display AS: This leaflet is not complete without a specific manual for all installed electronic cards.

ND7037A : 67mm LED Numerical Display Stop/Go



- Reading distance 1 to 25m
- Red 'Stop' and green 'Go' signal
- Alternative controls for Stop/Go
- IP65 and wide temperature range
- Auto Intensity & low power 0,1 to 15W
- Perfect in direct sunlight - and at night

User's Guide

Ordering

N6/1-67-R (Numeric 6 digits/ 1 line - 67 mm digit height - Red LED)

Standard configuration is:

- Serial data controller (RS-232, RS-485 and TTY20mA)
- Power requirement: 100 to 240Vac 50/60Hz
- Tilttable bracket for wall- and pole mounting
- 2 x M20 cable inlets for cable dimensions $\varnothing=6$ to 13mm

.... and as you always should expect: highest quality components and unparalleled support.

Option:Power

12Vdc regulated voltage may be used.

Option:Interface

- Ethernet 10/100
- WiFi
- A/D 20mA (4..20mA)
- Counter Up/Down
- Time/Date GPS
- Temperature (digital)
- RF and more...

Option:Mechanical

- Out-from-Wall Mount
- Ceiling Suspension
- Sticker/label (°C,m,%,...)



Norsk Display AS
Tel: (+47) 3288 7000
Fax: (+47) 3288 7001
sales@norskdisplay.com

Mechanical Mounting

1

Mounting the display should be quite straightforward, just make sure every fitting is properly tightened. Safeguard the installation to avoid health hazards!

You need to supply:

Fasteners for your specific needs, e.g: wood screws, straps to go around the pole

Tools

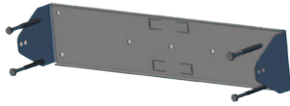
2



- Torx 20 + 25 + 30

Wall Mounting

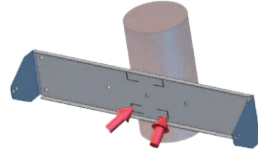
3



- Screws must be supplied by the installer (typ 6x50mm)

Pole Mounting

4



Press tags to fit, then use steel straps to fix. (User supplied)

Did you know...

?

- A larger version of this display is available with 125mm character height. Ask for ND7046.

Extremely reliable and long life LCD displays are also available.

Did you know...

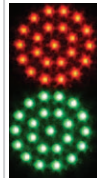
?

- Service or installation help is best given through your normal supplier. However, if needed, the factory will always help you as best they can. Happy users are our best sales argument.

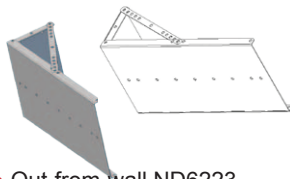
Option:Control

!

- Stop/Go light is controlled via the serial protocol or by separate optocoupler input lines (extra option).



Option:Mounting



- Out-from-wall ND6223 (adjustable angle)

Option:Labels

pcs
stk % °C mm

- Any adhesive designator sticker.

Option:Electrical



- Ethernet ND5129 card

Electrical Mounting

A



The enclosure must be connected to Protective Earth. This is vital for safe operation. Failure to observe correct grounding may cause serious injury.

Grounding is further vital for full CE compliance and must be provided for correct operation.

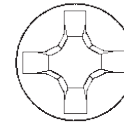
Disconnect power when servicing the display.

Tools

B



- Torx 20 + 25



- Phillips #2/1

Cable Dimension

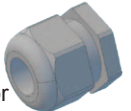
C

- ø 6..13mm outer dia
- conductors 0,2-0,75mm² (AWG 24 to AWG18)
- Keep ground leads short

Cable Inlets

D

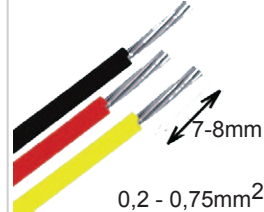
- M20x1,5 is used
- Hand tighten
- Block unused glands!



Tip: use strips for extra pull-out protection

Dismantling

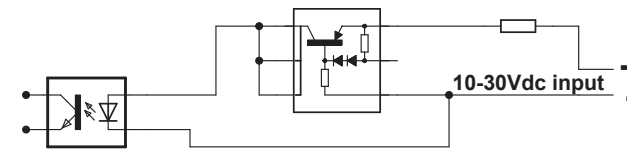
E



Connection

F

- Follow directions in separate Users Guide for the installed card



OPTIONAL OPTO CONNECTOR:

* Voltage above 8Vdc will activate the traffic light.

* Max current drawn is 22mA/input.

Molex 2060 SMD connectors may be retrofitted. Ask factory!

Option:

Want some other elements or different behaviour? Just ask the factory - it may already be available. It may even be free of cost. We will give you quick feedback.

Feedback

We appreciate any feedback. Good or bad; it will help us serve you better.

Suggestions or critical remarks are best sent to the support email.

Support

- Free protocol adaption for your equipment!
- Help during installation

support email:
sales@norskdisplay.com
Tel: [+47] 3288 7000